



### Impression Resin Flooring Systems for Commercial and Residential Use.

Kline is a high quality seamless methacrylate resin flake type floor finish that utilises a blend of recycled aggregate as well as our unique to give a luxurious, high quality, bespoke finish floor has all the qualities of a conventional quartz floor and has the advantage of chemical resistance, no cracking and excellent resistance to abrasion, impact and maintenance free with the ultimate life expectancy of 20 plus years.

#### Decorative Flake FeRFA Type 4 Flooring

Up to 50% of an Impressions Kline floor is made from **recycled** aggregates coloured to suit the client's needs. Abrasion resistant improved by 2.7 times more than any traditional aggregates.

#### Benefits:

- Up to 65,000 colours available.
- Decorative floor finish
- High scratch resistance
- Easy to clean and maintain
- Excellent wear and impact resistance
- Seamless, hygienic finish
- High chemical resistance
- Slip Resistance Finishes
- Rapid installation 1 hour cure times available
- Excellent resistance to UV light

*Impression's Kline* is available in customised colour blends to match specific requirements. Colours can be matched to RAL/BS numbers or coloured matched to sample materials.

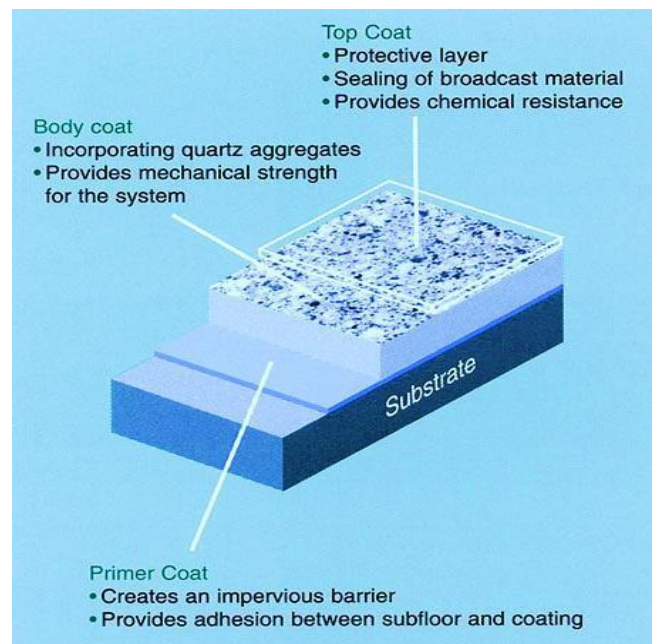
#### Description:

*Impression's Kline* is a hard wearing, decorative floor system made up of colour stable recycled aggregates.

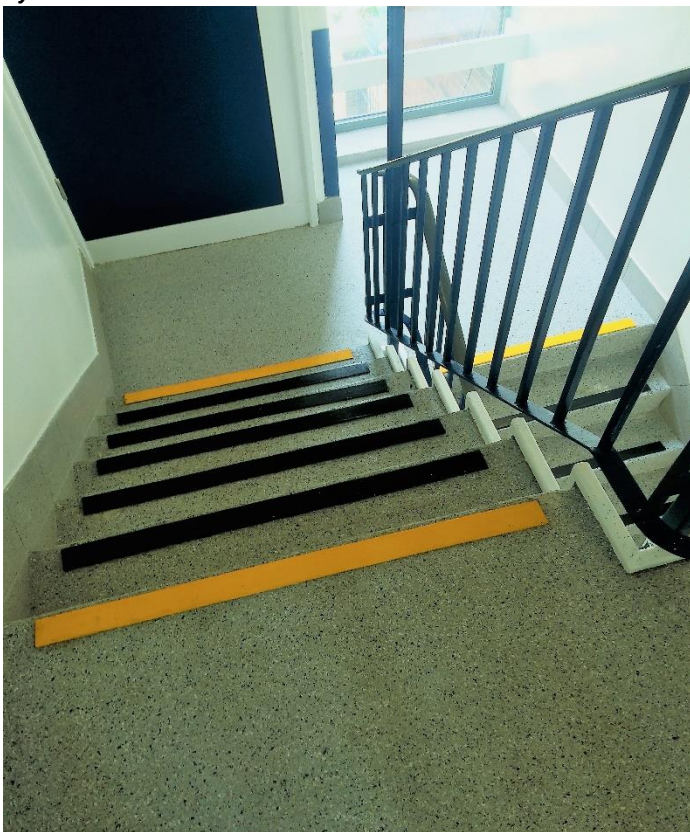
#### Uses:

Ideal for public areas, shops, department stores, car showrooms, restaurants, garden centres, commercial kitchens, trendy bars and cafes, museums, art galleries, discos and casinos.

The slip resistant version is ideal for use in production areas, kitchens and wet and dry process areas where the floor is subject to heavy traffic, impact and chemical spills.



*Italian Terrazzo flooring was in vogue during the 1970's but very expensive so the idea of incorporating PVA flakes in thin film resin systems was developed. At Deva, this is being taken further by incorporating our own recycled aggregates in addition to our unique blend of PVA flakes making our Kline System more durable than others on the market.*



## Model Specification:

Product: **Impression Stilj** (general specification)  
Finish: **Satin**  
Thickness: **4-6 mm**  
Colour: **Client's Choice**  
Supplier: **Deva Resins Ltd**  
Telephone: **+44 (0) 151 347 9598**

Preparatory work and application in accordance with suppliers Instructions.

## Substrate Requirements:

Concrete or screed substrate should be a minimum of 25N/mm<sup>2</sup>, free from laitance, dust and other contamination. The substrate should be dry to 95% RH as per BS8204 and free from rising damp and ground water pressure. A special primer can be used for substrates up to 100% RH (surface dry).

## Products Included in this System:

Primer: **D10**  
Base: **D15**  
Scatter: **Kline Flake**  
Sealer: **D18 (1-2 coats)**

## Environmental Considerations:

The finished system is assessed as non-hazardous to health and the environment. The long service life and seamless surface reduce the need for repairs, maintenance and cleaning.

Environmental and health considerations are controlled during manufacture and application of the products by fully trained experienced Deva Resins Staff.

## Technical Information:

The figures that follow are typical properties achieved in laboratory tests at 20°C and at 50% Relative Humidity.

Tailored properties can be achieved with the selection of specific resins that are available on request.

**Slip Resistance:** Dry >40 low slip potential

Method described in BS 7976-2 (typical values for 4-S rubber slider)  
The slipperiness of flooring materials can change significantly, due to the installation process, after short periods of use, due to inappropriate maintenance, longer-term wear and/ or surface contaminants (wet or dry).

Textured systems are recommended to meet slip resistance value requirements for wet conditions and/ or surface contaminants (wet or dry) - please contact our Technical Advisors for further details and specifications.

**Fire Resistance:** EN 13501-1 B<sub>FL</sub> - s1

**Impact Resistance:** ISO6272 1 kg weight >1.8 m  
2 kg weight >1.5 m

**Abrasion Resistance:** BS 8204-2 >Class AR1  
Heavy duty industrial and commercial

**Temperature Resistance:** Tolerant of sustained temperatures up to 70°C.

**Water Permeability:** Nil – Karsten test. (Impermeable)

**Chemical Resistance:** Good resistance to tea, coffee, cola, fruit juice, soaps and bleach. (for specific chemicals please consult chemical resistance chart).

**Compressive Strength:** 60 N/mm<sup>2</sup> (BS 6319)

**Flexural Strength:** 20 N/mm<sup>2</sup> (BS 6319)

**Tensile Strength:** 15 N/mm<sup>2</sup> (BS 6319)

**Bond Strength:** Greater than cohesive strength of category 6.

**Speed of Cure (per coat):** Walk on 1 hour  
Full traffic & chemical cure 2 - 3 hours  
Cure at temperatures in the range 0°C to +30°C can be achieved by altering the quantity of catalyst used. For applications below 0°C, please consult Technical Department.

## Aftercare - Cleaning and Maintenance:

Clean regularly using a single or double headed rotary scrubber drier in conjunction with a mildly alkaline detergent.

## Important Note:

To ensure you are specifying a fit for purpose flooring system for your project please consult our Technical Advisors on the number above or visit our website to register your interest in specifying one of the most durable floors on the market.